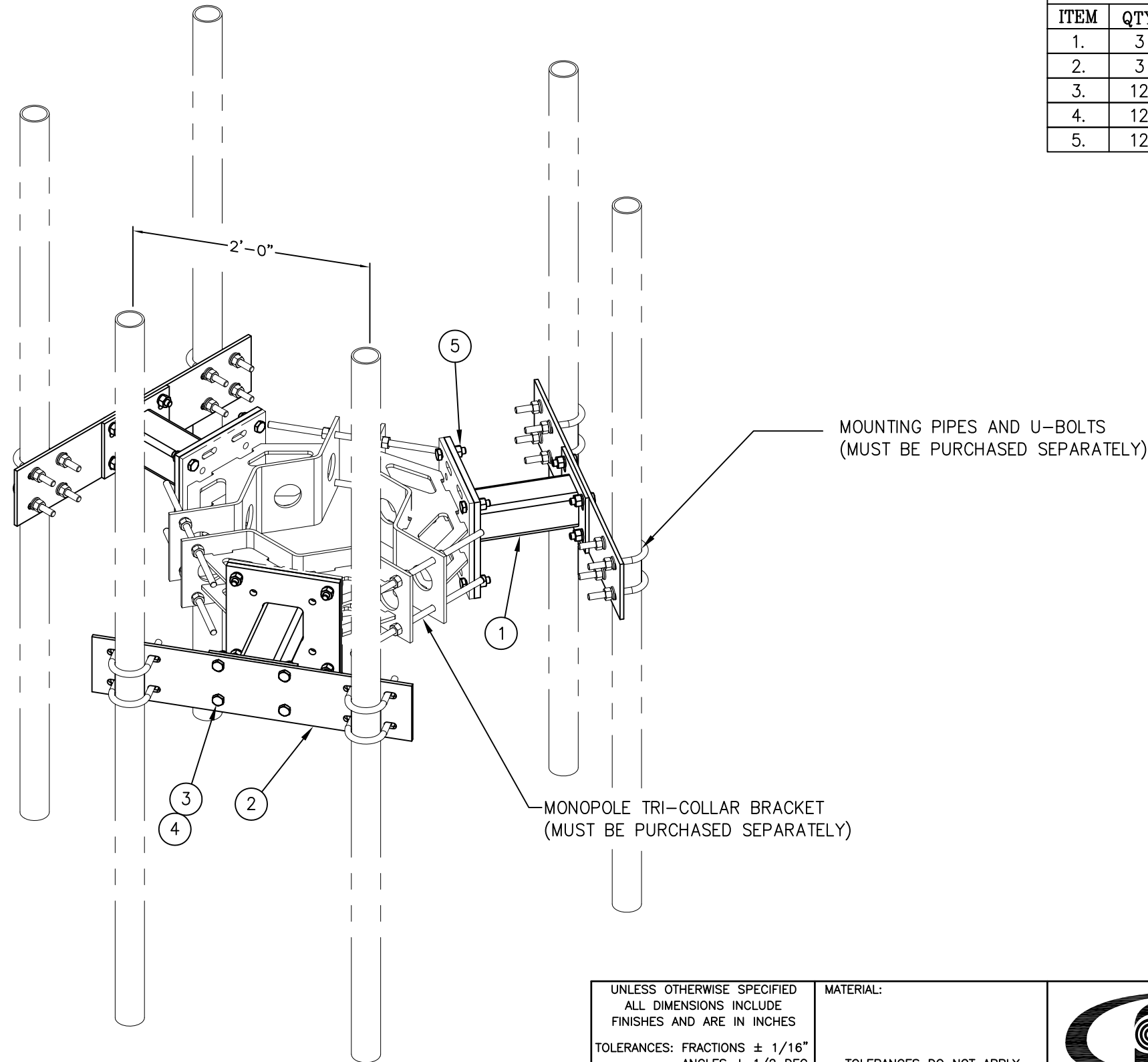




C10114200 1' STANDOFF W/2' SEPARATION

ITEM	QTY.	PART. NO.	DESCRIPTION	WEIGHT
1.	3	CW00484	WELDMENT, 1' STANDOFF	114
2.	3	CS01855	PLATE, 2' SEPARATION	71
3.	12	C40026023	BOLT ASSEMBLY, 5/8 ϕ X 2 A325	6
4.	12	C40031003	FLATWASHER, 5/8 ϕ	1
5.	12	C40026025	BOLT ASSEMBLY, 5/8" ϕ X 2 1/2" A325	6
TOTAL WEIGHT				198



ISOMETRIC VIEW

UNLESS OTHERWISE SPECIFIED
ALL DIMENSIONS INCLUDE
FINISHES AND ARE IN INCHES
TOLERANCES: FRACTIONS $\pm 1/16''$
ANGLES $\pm 1/2$ DEG.
DECIMALS $\pm .010''$

MATERIAL:
TOLERANCES DO NOT APPLY
TO RAW MATERIAL



CONFIDENTIAL
This document and the information
contained herein is the confidential trade
secret property of Sabre Communications
Corporation ("Sabre") and must not be
reproduced, copied or used, in whole or in
part, for any purpose without the prior
written consent of Sabre.
© 2009 Sabre Communications Corporation.
All rights reserved.

1' STANDOFF WITH 2' SEPARATION
NO ANTENNA MOUNTING PIPES

REV	DATE	DRW/CHK	DESCRIPTION

DATE	7/15/09	SIZE B	DRAWING NO. C10114200	REV 0
DRAWN BY	JV			
CHECKED BY	MC	SCALE None	PAGE 1 OF 1	