

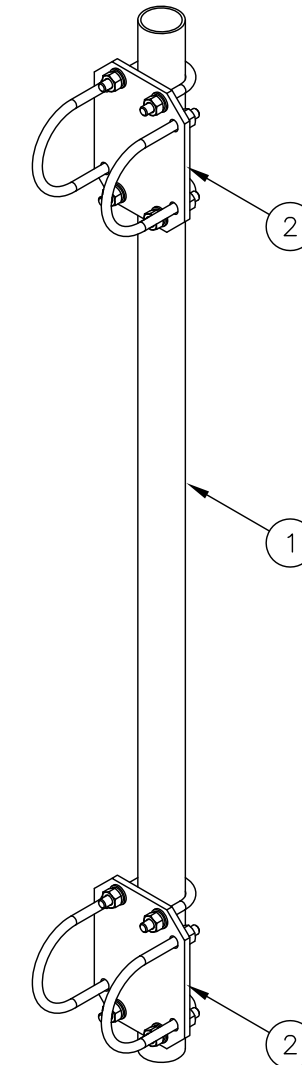
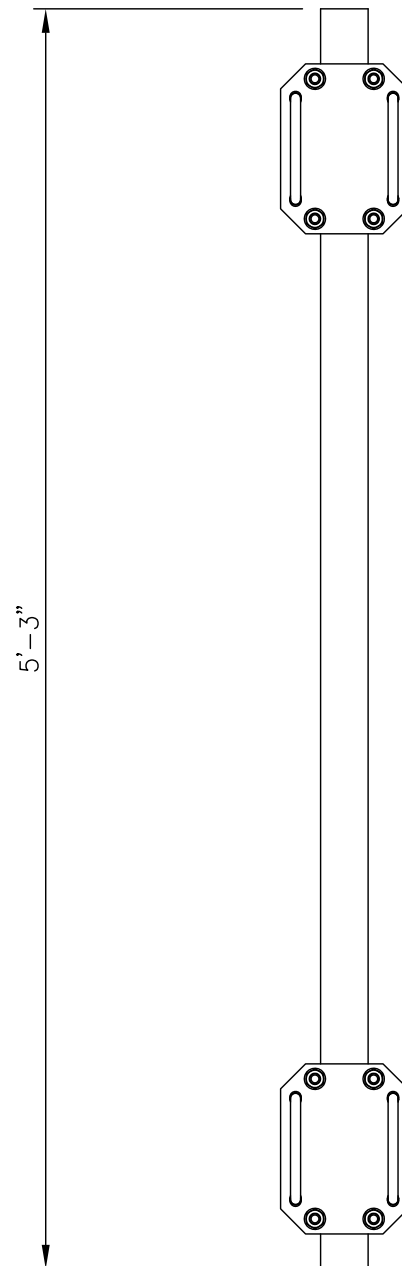
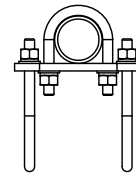


C10153458 (FMVS-4) TOWER FACE MOUNT STRUT SUPPORT

ITEM	QTY.	PART NO.	DESCRIPTION	WEIGHT
1.	1	CS03265	PIPE, 2 3/8 O.D. X .154 X 5'-3"	20
2.	2	C10902017	CROSSOVER PLATE KIT, 2 3/8 TO 4 1/2"	18
TOTAL WEIGHT				38

* EACH C10902017 CROSSOVER PLATE KIT CONSISTS OF . . .

- (1) CS03194 CROSSOVER PLATE
- (2) C40034139 U-BOLT ASSEMBLY, 1/2 Ø X 2 15/16 C-C
- (2) C40034170 U-BOLT ASSEMBLY, 1/2 Ø X 5 1/16 C-C



UNLESS OTHERWISE SPECIFIED
ALL DIMENSIONS INCLUDE
FINISHES AND ARE IN INCHES

TOLERANCES: FRACTIONS ± 1/16"
ANGLES ± 1/2 DEG.
DECIMALS ± .010"

MATERIAL:

TOLERANCES DO NOT APPLY
TO RAW MATERIAL



TOWER FACE MOUNT STRUT SUPPORT
(2 3/8" O.D. TO 4 1/2" O.D.)
(FMVS-4)

REV	DATE	DRW/CHK	DESCRIPTION

CONFIDENTIAL

This document and the information contained herein is the confidential trade secret property of Sabre Communications Corporation ("Sabre") and must not be reproduced, copied or used, in whole or in part, for any purpose without the prior written consent of Sabre.

© 2015 Sabre Communications Corporation. All rights reserved.

DATE	03/16/15	SIZE	B	DRAWING NO.	C10153458	REV	0
DRAWN BY	WRF	SCALE		PAGE		None	
CHECKED BY	KLE	None		1 OF 1		None	