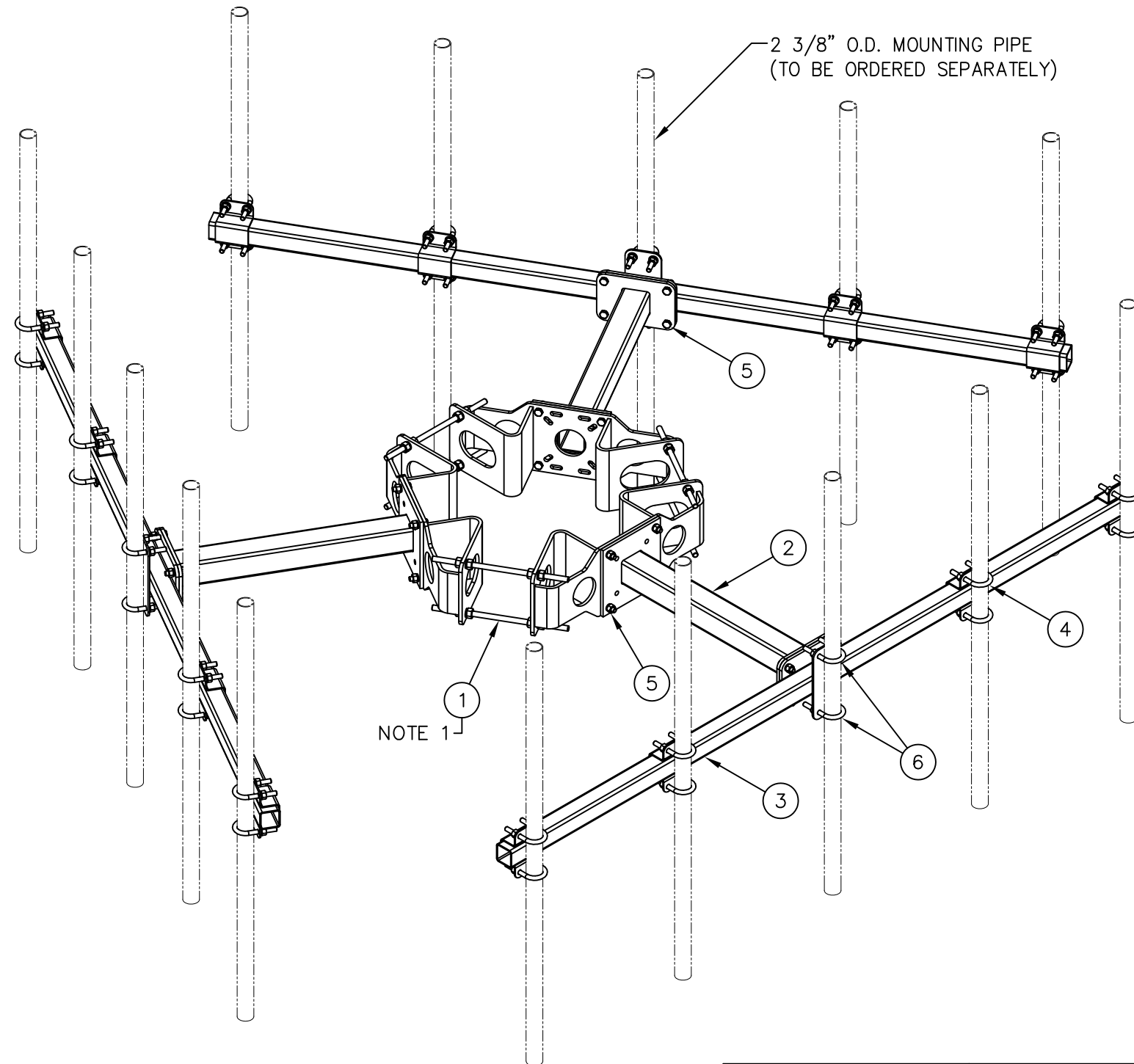


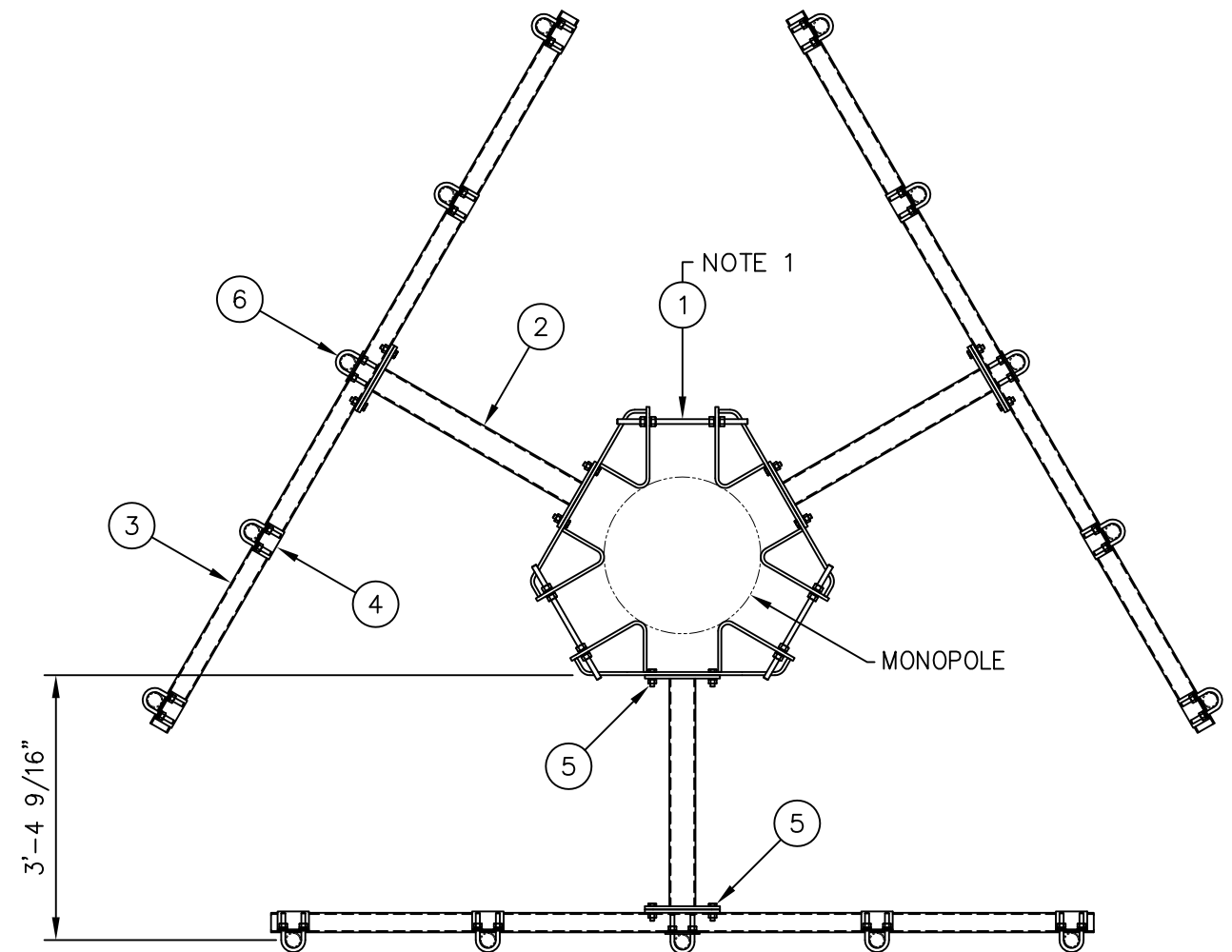


LIST OF MATERIAL

ITEM	QTY.	PART NO.	DESCRIPTION	WEIGHT
1.	1	C10112301	TRI-COLLAR BRACKET ASSEMBLY	330
2.	3	CW00667	WELDMENT, 3' T-ARM STANDOFF	168
3.	3	CW00668	WELDMENT, 10'-6 SQ. TUBE T-ARM	278
4.	12	C40207001	PIPE MOUNT ASSEMBLY FOR SQ. TUBE	69
5.	24	C40026024	BOLT ASSEMBLY, 5/8 ϕ X 2 1/4 A325	12
6.	6	C40034023	U-BOLT ASSEMBLY, 5/8 ϕ X 3 1/16 C-C	10
TOTAL WEIGHT				867



ISOMETRIC VIEW



PLAN VIEW

NOTES:

1. TRI-COLLAR BRACKET ASSEMBLY FITS POLES FROM 40" TO 60" DIAMETER.
2. THE 2 3/8" O.D. MOUNTING PIPES ARE TO BE ORDERED SEPARATELY BY LENGTH.

UNLESS OTHERWISE SPECIFIED ALL DIMENSIONS INCLUDE FINISHES AND ARE IN INCHES			MATERIAL:
TOLERANCES: FRACTIONS $\pm 1/16"$ ANGLES $\pm 1/2$ DEG. DECIMALS $\pm .010"$			TOLERANCES DO NOT APPLY TO RAW MATERIAL
REV	DATE	DRWCHK	DESCRIPTION



CONFIDENTIAL
This document and the information contained herein is the confidential trade secret property of Sabre Communications Corporation ("Sabre") and must not be reproduced, copied or used, in whole or in part, for any purpose without the prior written consent of Sabre.
© 2010 Sabre Communications Corporation. All rights reserved.

SAF-T-ARM ASSEMBLY
3'-0 ARM WITH 10'-6 FACE
(FOR 40"-60" DIA. MONOPOLES)

DATE	11/08/10	SIZE	B	DRAWING NO.	C10856651	REV	0
DRAWN BY	WRF	SCALE		PAGE		None	
CHECKED BY	KLE	None		1 OF 1		None	