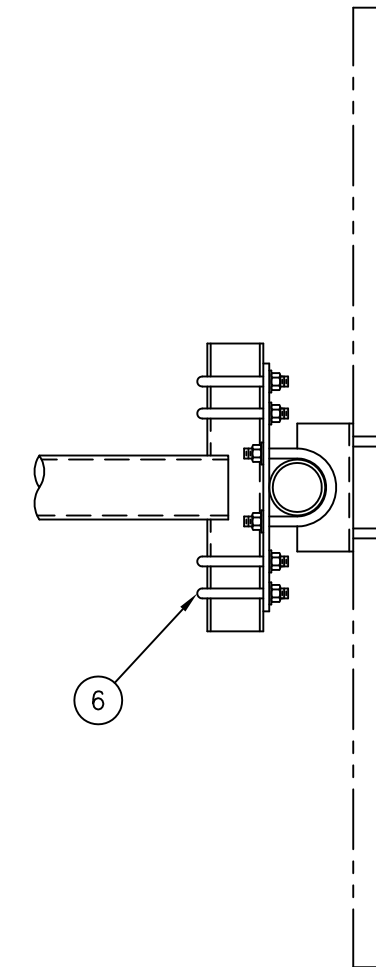
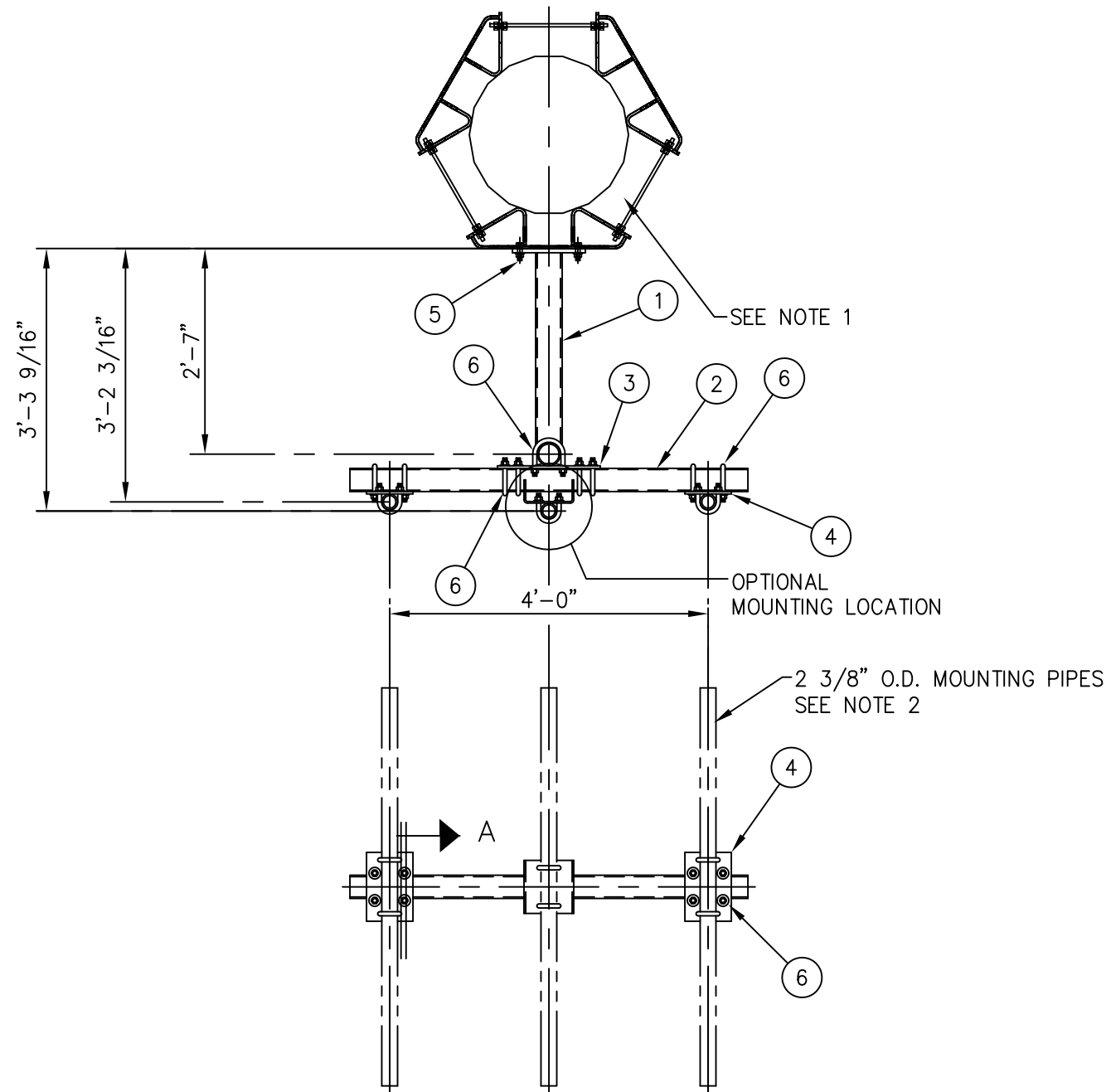




LIST OF MATERIAL				
ITEM	QTY.	DWG. NO.	DESCRIPTION	PART NO.
1.	1	CW00144	T-ARM WELDMENT	64.9#
2.	1	CW00076	SUPPORT PIPE	46.0#
3.	1	CS00038	T-ARM CROSSOVER PLATE	22.0#
4.	2	CS00071	PIPE CROSSOVER PLATE	16.0#
5.	4	C40026025	BOLT ASSEMBLY, 5/8"Ø X 2 1/2 A325	1.9#
6.	12	C40034028	U-BOLT ASSEMBLY, 5/8"Ø X 4 3/16 C/C	23.0#
APPROX. GALV. WEIGHT				173.8#



SECTION A-A

NOTES:

1. TRI-COLLAR MOUNTS MUST BE PURCHASED SEPARATELY.
2. 2 3/8" O.D. MOUNTING PIPE & U-BOLTS MUST BE PURCHASED SEPARATELY.
3. QUANTITIES SHOWN IN LIST OF MATERIAL ARE FOR ONE (1) T-ARM ASSEMBLY ONLY.

UNLESS OTHERWISE SPECIFIED ALL DIMENSIONS INCLUDE FINISHES AND ARE IN INCHES			MATERIAL:		
TOLERANCES: FRACTIONS ± 1/16" ANGLES ± 1/2 DEG. DECIMALS ± .010"			TOLERANCES DO NOT APPLY TO RAW MATERIAL		
REV	DATE	DRW/CHK	DESCRIPTION		

Sabre Industries™
Towers and Poles

CONFIDENTIAL

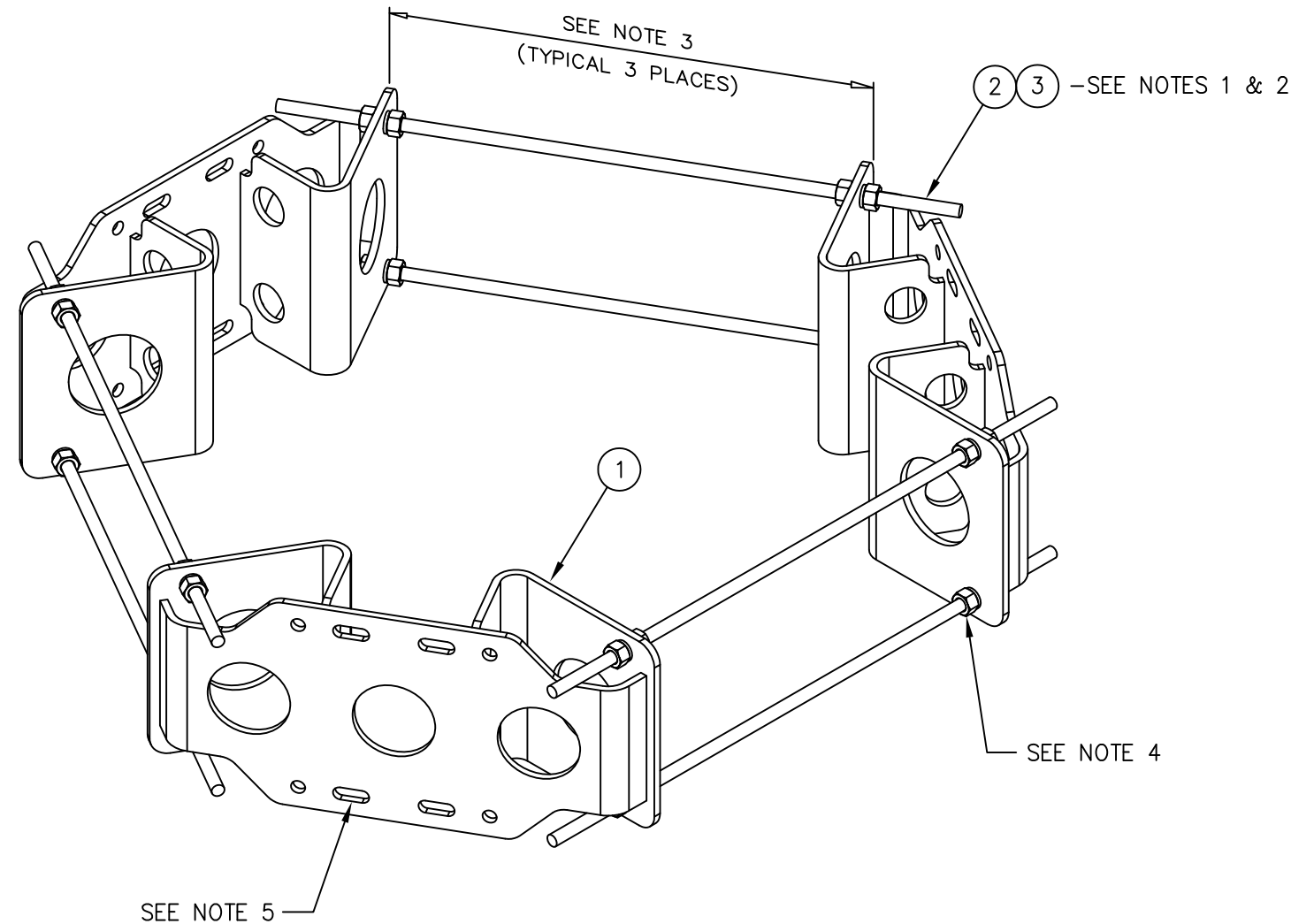
This document and the information contained herein is the confidential trade secret property of Sabre Communications Corporation ("Sabre") and must not be reproduced, copied or used, in whole or in part, for any purpose without the prior written consent of Sabre.
© 2014 Sabre Communications Corporation. All rights reserved.

T-ARM ASSEMBLY				
3'-0" ARM WITH 4'-0" FACE				
DATE	03/26/04	SIZE	DRAWING NO.	REV
DRAWN BY	JKW	B	C10113101	0
CHECKED BY	MLC	SCALE	PAGE	
		None	1 OF 1	



C10112300 TRI-COLLAR ASSEMBLY (10"-40" MONOPOLE)

ITEM	QTY.	PART. NO.	DESCRIPTION	WEIGHT
1.	3	CW00835	WELDMENT, TRI-COLLAR (10"-40" MONOPOLE)	151
2.	6	C40094012	THREADED ROD ASSEMBLY 5/8 X 2'-9"	25
3.	6	C40094002	THREADED ROD ASSEMBLY 5/8 X 1'-6"	17
TOTAL WEIGHT				193



ISOMETRIC VIEW

NOTES:

1. THERE ARE (2) LENGTHS OF THREADED ROD SUPPLIED TO ACCOMMODATE DIAMETERS LISTED BELOW
 USE 5/8 X 1'-6" THREADED ROD ASSEMBLY FOR 10"-24" MONOPOLE DIAMETERS
 USE 5/8 X 2'-9" THREADED ROD ASSEMBLY FOR 24"-40" MONOPOLE DIAMETERS (SEE NOTE 2)
2. THREADED ROD MAY BE SHORTENED IF REQUIRED, FIELD CUT AND COLD GALV SPRAY TO SUIT.
3. THIS DISTANCE MUST BE EQUAL IN ALL (3) THREE LOCATIONS TO ENSURE THE STRUCTURAL INTEGRITY OF THE THREADED RODS AS WELL AS 120° SEPARATION.
4. FOR MONOPOLES 13" DIA. OR SMALLER, ONLY (1) ONE NUT AND (1) ONE LOCKWASHER ARE REQUIRED BETWEEN THE TRI-COLLAR BRACKETS.
 FOR MONOPOLES LARGER THAN 13" DIA., (2) TWO NUTS AND (2) TWO LOCKWASHERS ARE REQUIRED BETWEEN THE TRI-COLLAR BRACKETS.
5. THE MOUNTING SLOTS NOTED WILL ACCOMMODATE 2 3/8"-4 1/2" O.D. MOUNTING PIPES.

UNLESS OTHERWISE SPECIFIED
 ALL DIMENSIONS INCLUDE
 FINISHES AND ARE IN INCHES
 TOLERANCES: FRACTIONS ± 1/16"
 ANGLES ± 1/2 DEG.
 DECIMALS ± .010"

MATERIAL:
 TOLERANCES DO NOT APPLY
 TO RAW MATERIAL



TRI-COLLAR BRACKET ASSEMBLY
 FOR MONOPOLES (10"-40" DIA.)
 (CIRCUMFERENCE 31.4" TO 125.7")

REV	DATE	DRW	CHK	DESCRIPTION
2	8/11/10	DLW	DEL	ADDED 5/8 X 1'-6" THREADED ROD
1	1/6/10	MLC	MC	REDRAWN IN AUTOCAD

CONFIDENTIAL
 This document and the information contained herein is the confidential trade secret property of Sabre Communications Corporation ("Sabre") and must not be reproduced, copied or used, in whole or in part, for any purpose without the prior written consent of Sabre.
 © 2014 Sabre Communications Corporation. All rights reserved.

DATE	8/21/09	SIZE	B	DRAWING NO.	C10112300	REV	2
DRAWN BY	JV	CHECKED BY	MLC	SCALE	None	PAGE	1 OF 1